

:congresscenterrosengarten

Concert and Eventinformation

Musensaal

m:con
VISION INTO CONVENTIONS



Table of Contents

| | |
|---|----|
| I. General Information | |
| II. Directions / Loading / Parking | |
| 1. Directions | 4 |
| 2. Loading | 8 |
| 3. Parking for Nightliners/Trucks | 9 |
| III. Stage / Stage Technology | |
| 4. Stage Plans | 10 |
| 5. Stage Technology | 12 |
| 6. Orchestra Equipment & Instruments | 14 |
| IV. Backstage/Rear Area | |
| 7. Dresseing Rooms / Backstage Facilities | 16 |
| V. Front-of-House | |
| 8. Seating Plans / Hall Layouts | 17 |
| 9. Merchandising | 19 |
| 10. Ticketing / Box Office | 19 |
| 11. Catering | 19 |
| VI. Miscellaneous | |
| 12. House Rules | 19 |
| 13. Technical Guidelines | |

I. General Information

Venue / Hall

Musensaal
Congress Center Rosengarten – Mannheim,
Rosengartenplatz 2, 68161 Mannheim,
Deutschland

Type of Hall

Concert Hall / Congress Center

Capacity

Standing (unseated): Gross floor area parquet: 580m². Note: Please consider the net area calculated based on necessary installations such as barriers, FOH, accessible platforms, in consultation with your m:con contact.
Balcony: 541 Visitors, fixed seating

seated max. 1.358 Besucher (including fixed seating on the balcony), Parquet: 826 Besucher; Balcony: 541 Visitors

FOH (Front of House) Position

Row 28 Seats 10-19
Row 29 Seats 10-19

m:con contact

Reception: +49 (0)621 / 4106 0

Technical Planning & Service

Corporate & Shows

Sabrina Bederke
(sabrina.bederke@mcon-mannheim.de)

: Shows & Concerts:

Timo Oleksiuk
(timo.oleksiuk@mcon-mannheim.de)

: Classical:

Björn Hemmann
(bjoern.hemmann@mcon-mannheim.de)

Project Management Corporate & Shows

Hannes Krosta
(hannes.krosta@mcon-mannheim.de)

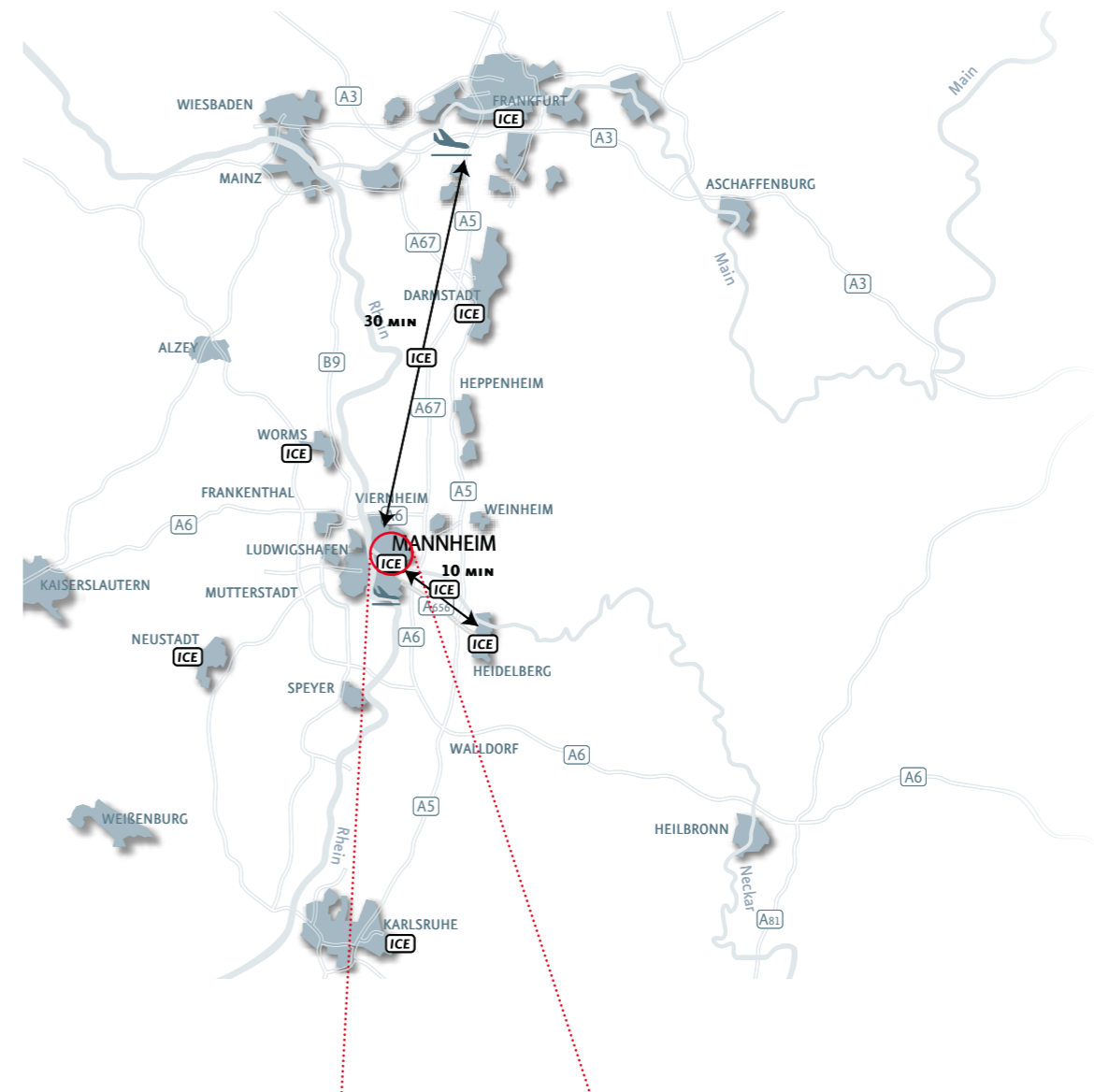
: Shows & Concerts:

Hannes Krosta
(hannes.krosta@mcon-mannheim.de)

Ilka Stellmach
(ilka.stellmach@mcon-mannheim.de)

: Classical:

Philipp Staubach
(philipp.staubach@mcon-mannheim.de)



II. Directions/Loading/Parking

1. Directions

Your Way to Us: m:con and the Congress Center Rosengarten Mannheim

Nestled between the Rhine and Neckar rivers lies one of Germany's most livable regions—the Rhine-Neckar Metropolitan Region. Just outside Mannheim is the Palatinate, one of Germany's most beloved wine regions, and only 15 minutes away is the internationally renowned Heidelberg Castle.

With excellent connections to major transportation routes and proximity to Frankfurt Airport, the location offers ideal logistical conditions for congresses, conferences, and events of all kinds. Congress Center Rosengarten Mannheim

Adress

Congress Center Rosengarten
Rosengartenplatz 2
68161 Mannheim

Arrival by car

From the A5 motorway (coming from Frankfurt or Karlsruhe): At the Heidelberg interchange, take the exit toward Mannheim and follow the A656. In Mannheim, continue straight past the Planetarium. At the end of Augustaanlage, you'll reach Friedrichsplatz with Mannheim's landmark, the Water Tower.





The Congress Center Rosengarten is located there.

Cologne, Munich, Paris, Stuttgart, and many other cities.

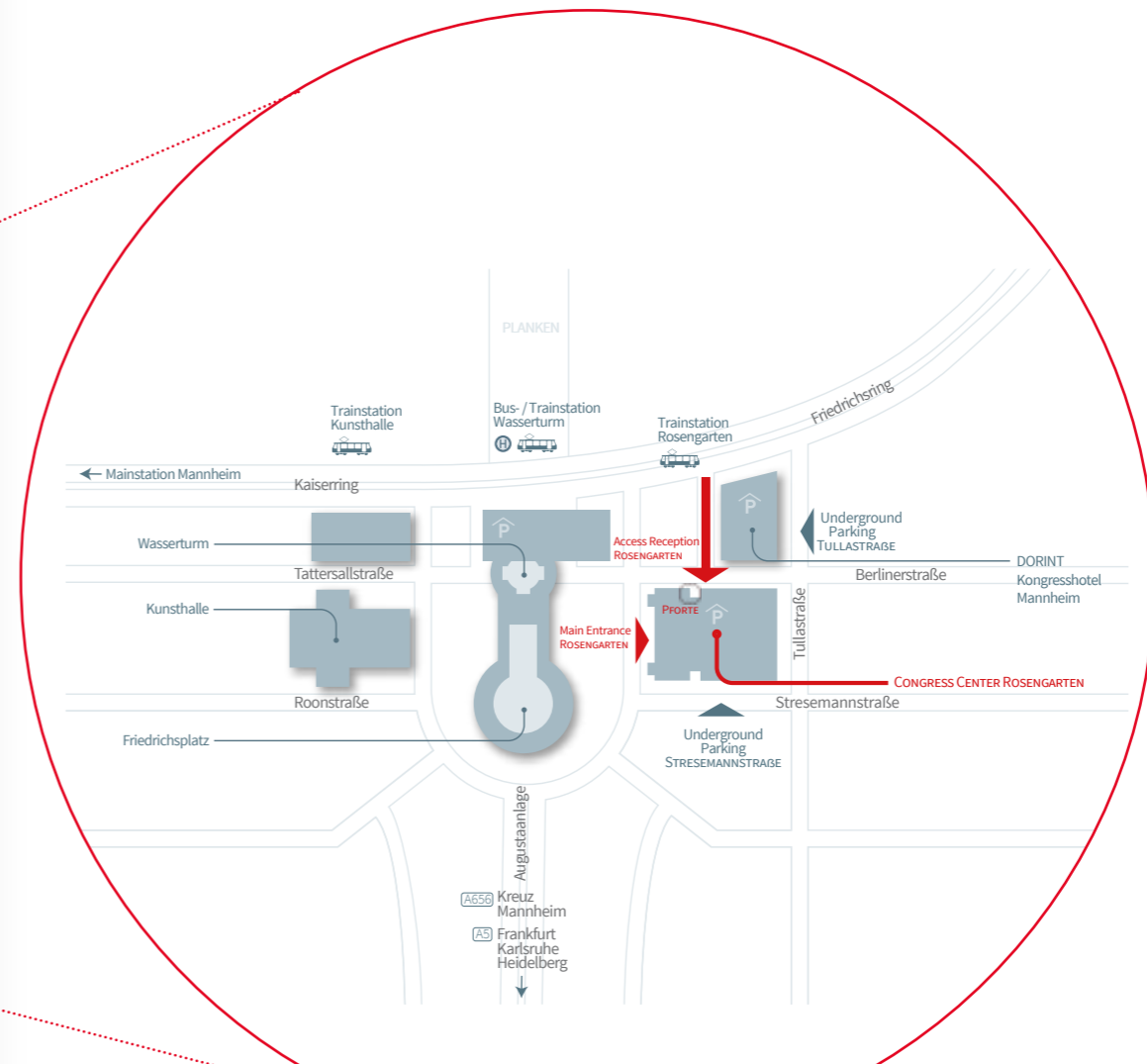
From the A6 motorway (coming from Stuttgart or Saarbrücken): At the Mannheim interchange, take the exit toward Mannheim and follow the A656. Continue straight past the Planetarium. At the end of Augustaanlage, you'll reach Friedrichsplatz and the Congress Center.

By Plane
Frankfurt Airport is directly connected to Mannheim via the ICE network (travel time approx. 30 minutes). From Mannheim Central Station, the Rosengarten is a 10-minute walk toward the city center.

Parking
Parking is available directly beneath the CC Rosengarten in our own parking garage and the Kunsthalle underground garage.

By Train
Mannheim is a major hub in the Deutsche Bahn network. Direct ICE connections are available to Basel, Berlin, Düsseldorf, Frankfurt (Main), Frankfurt Airport, Freiburg, Hamburg,

More info: mcon-mannheim.de/contact



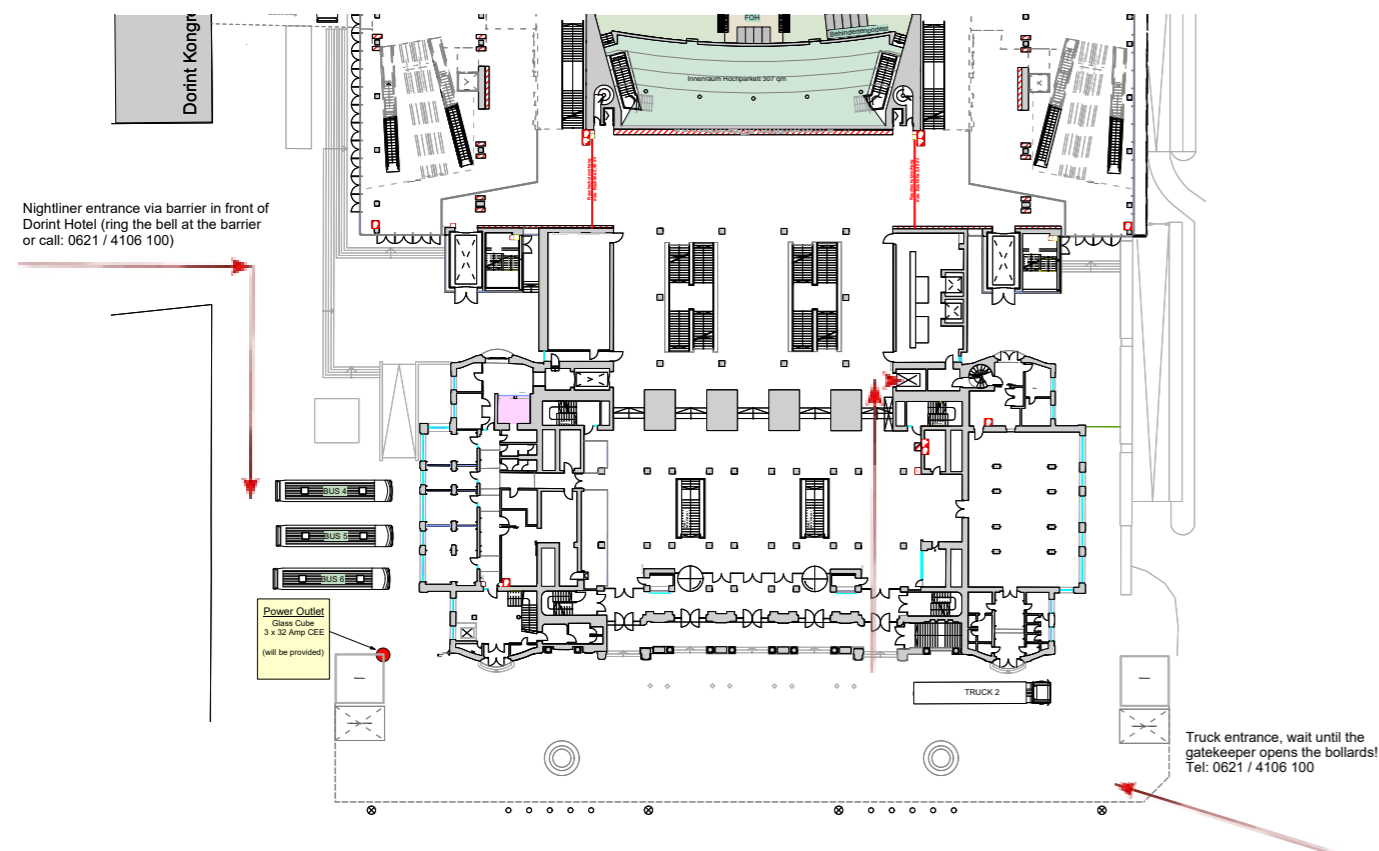
2. Loading

Delivery

| | |
|---------------|--|
| Location | via Reception and/or Corner of Stresemannstraße and Friedrichsring - by arrangement |
| Loading times | via Reception: 7 am – 10 pm, after 10 pm, On Sundays and public holidays loading activities are only possible via the forecourt |
| Load Path | approx. 40m, using freight elevators |
| Forklift | For outdoor use available upon request |

Noise Emissions

Due to the central city location in Mannheim, please avoid unnecessary engine idling during loading/unloading to minimize noise and environmental impact for local residents. Thank you for your cooperation.

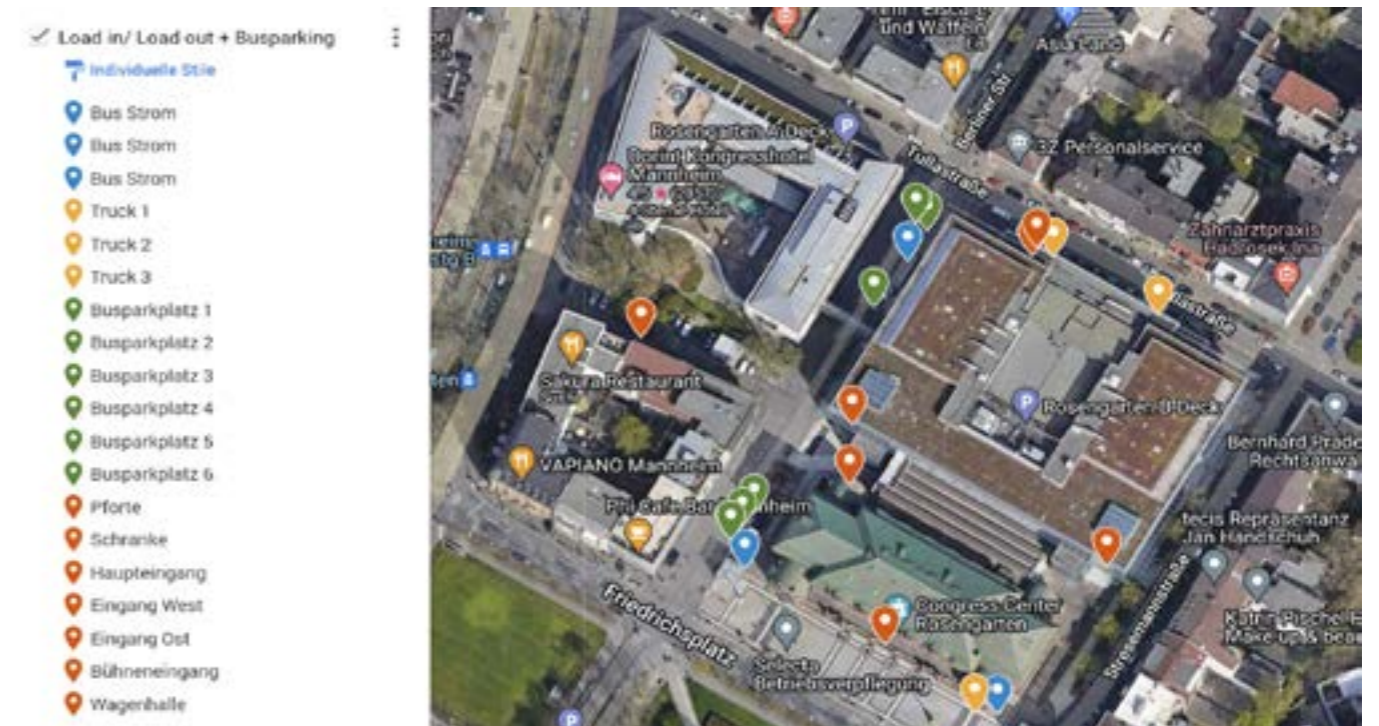


3. Parken Nightliner/LKW

Parken

| | |
|--------------|---|
| Outdoor area | max. 2 Trucks / Lorries 3 parking spaces für buses (Space 4, 5 and 6, or 7 next to the eastern glass cube) Power for buses provided as needed |
| Tiefgaragen | Capacity: up to 1,100 cars, max. height: 1.90 m |

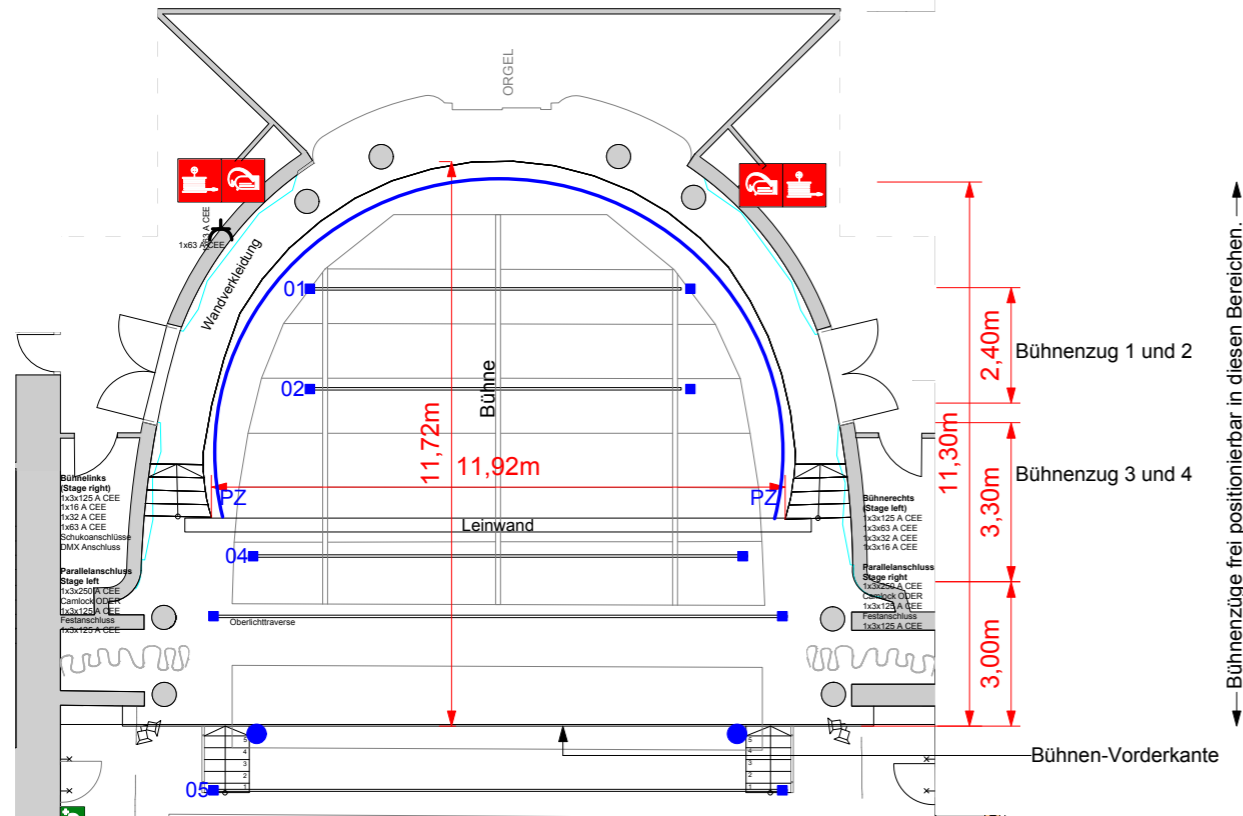
Google-Map with all the information concerning Loading and Parking can be found here.



III. Stage / Stagetechnology

4. Stage Plans

Stage with Riggingpoints



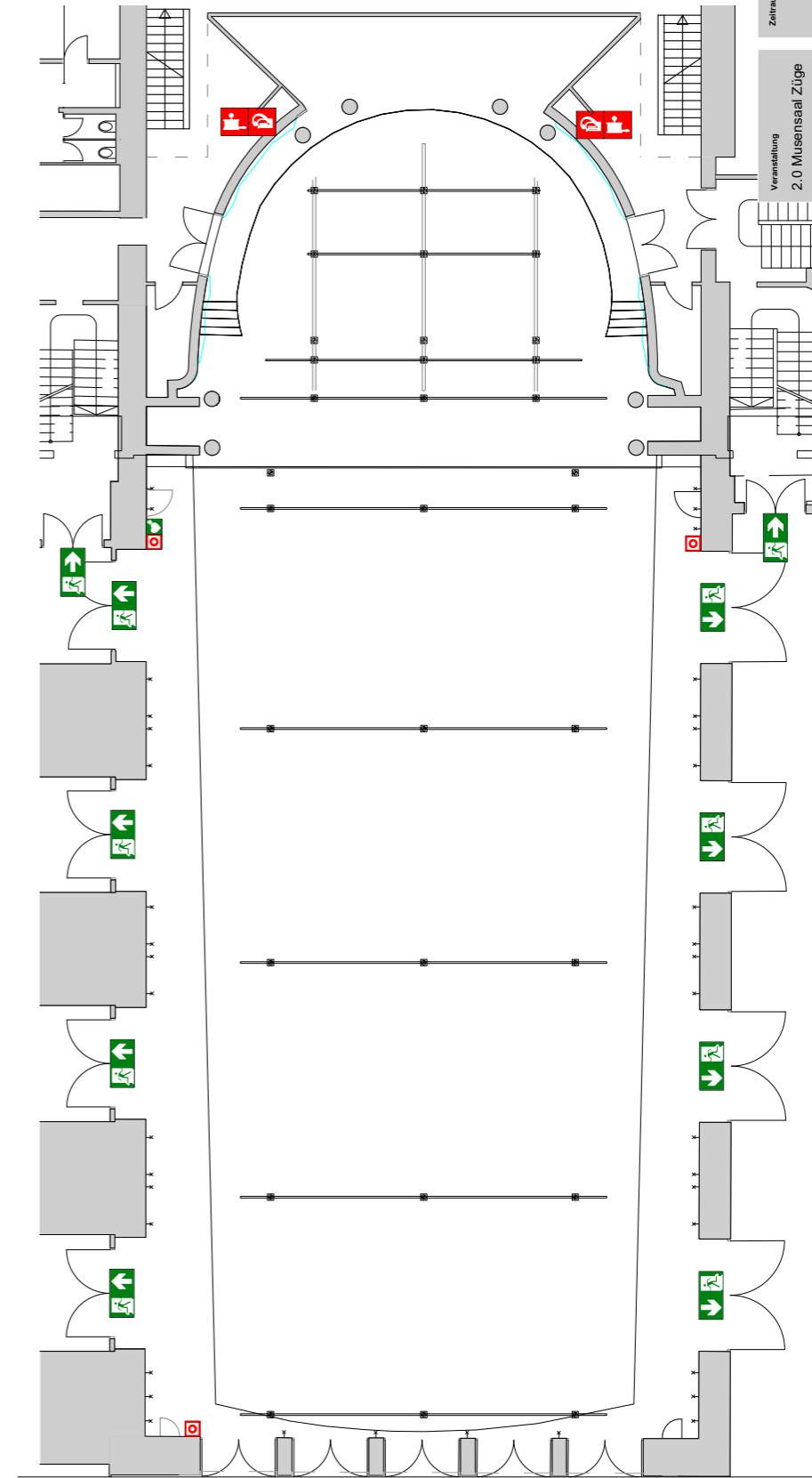
- - Bühnenzug Gesamtlast: 300 kg
- fahrbare Höhe: 950 cm
- Durchmesser Züge/Holme Traverse: 48 mm
- - Hängepunkt
- Bühnenhöhe: 1,10 m
- Oberlichttraverse: DMX-Anschluss, Versätze 6x2 kW, 1x5 kW
- PZ: Panorama-Zug (Rundhorizont aus Leinwandmaterial)

| | | |
|---|-----------------------------|-----------------------------|
| Veranstaltung Musensaal Bühne | Zeitraum von | |
| | Zeitraum bis | |
| Planinhalt Congress Center Rosengarten Mannheim Ebene 2 | Gezeichnet von Forsthoff | Gezeichnet am 17.12.2014 |
| | Geprüft von | Geprüft am |
| m:con VISION INTO CONVENTIONS m:con - mannheim.congress GmbH Congress Center Rosengarten Asselngartenstraße 2 / D-68161 Mannheim Tel.: +49(0)6214106-0 / Fax: +49(0)6214106-99321 www.mcon-mannheim.de / info@mcon-mannheim.de | Plangröße A3 | Maßstab 1:100 |
| | Druckdatum | 15.1.16 |

Datei: Musensaal_Bühne_2014.vwx

Bühnenzüge frei positionierbar in diesen Bereichen. →

Hall Bars



| | | |
|---|-----------------------------|-----------------------------|
| Veranstaltung 2.0 Musensaal Züge | Zeitraum von | |
| | Zeitraum bis | |
| Planinhalt Congress Center Rosengarten Mannheim Ebene 2 | Gezeichnet von Forsthoff | Gezeichnet am 28.07.2016 |
| | Geprüft von | Geprüft am |
| m:con VISION INTO CONVENTIONS m:con - mannheim.congress GmbH Congress Center Rosengarten Asselngartenstraße 2 / D-68161 Mannheim Tel.: +49(0)6214106-0 / Fax: +49(0)6214106-99321 www.mcon-mannheim.de / info@mcon-mannheim.de | Plangröße A3 | Maßstab 1:130 |
| | Druckdatum | 28.7.16 |

Flächenlast der Seilzüge: je 300 kg
Rohrdurchmesser Laststangen: 48 mm

Stage plan with Büttec platforms adapted to the curve

5. Stage Technology

Stage Dimension

| | |
|------------------|---|
| Width | max. approx. 13 m |
| Depth | 11 m |
| Height | 1,10 m |
| Stage platforms | Height-adjustable scissor platforms specially adapted to the curve |
| Side Stages | None |
| Clear Height | 9,50 m |
| Floor Load | 500 kg/m ² |
| Main Curtain | Available, motorised, infinitely steplessly movable |
| Fire Curtain | NO |
| Smoke Detectors | YES |
| Stage Drapes | available (black and blue, Gerriets) |
| Lighting | 1. Z-Bridge 12 x Robert Juliat 200w RGBL profile spotlight 4 x 600w 6 Farb LED Fresnel spotlight 2. Z-Bridge 6 x Robert Juliat 2,5kW profile spotlight 3 x 2kW Fresnel spotlight more lighting upon request |
| Sound | installed d&b sound system; more upon request |
| Special features | Stage tapers towards the rear (semicircle, see plan) |

Sound Technology

| | |
|---------------------------------------|---|
| d&b sound system - basic sound system | Centercluster: 9 x Y8 near field, T-10, delay speaker 10S and monitoring, Digital mixing console Yamaha CL5 |
|---------------------------------------|---|

Rigging

Due to the special circumstances of the stage roof, rigging is only possible after consultation

Fly Bars

5 backdrop bars (electric) with a surface load of 300 kg each - see plan
1 panorama bar (electric)

Hall Bars

5 electric bars with a load capacity of 300 kg each
2 chain bars with a load capacity of 500 kg each

Power Supply / Position

| | | |
|----------------|--|--------------------|
| Stage Right | 1 x 3 x 125 Amp CEE | 1 x 3 x 63 Amp CEE |
| | 1 x 3 x 32 Amp CEE | 1 x 3 x 16 Amp CEE |
| | Schuko | |
| Stage Left | 1 x 3 x 125 Amp CEE | 1 x 3 x 63 Amp CEE |
| | 1 x 3 x 32 Amp CEE | 1 x 3 x 16 Amp CEE |
| | Schuko | |
| parallel to SR | 1 x 3 x 250 Amp Camlock ODER | |
| | 1 x 3 x 125 Amp Festanschluss + 1 x 3 x 125A CEE | |

Articulated work platform

available upon request

Pyrotechnics / open flame

only with approval from m:con and authorities.

Please refer to our [Technical Guidelines](#)

<https://www.mcon-mannheim.de/en/downloads#technical-guidelines>

Note: Sparkulars must be registered in Mannheim

Smoke Detectors

build in

Volume limits

per legal regulations

Storage space for empties

available upon request

Sonstiges

| | |
|-------------------------|---|
| Multicore cable routing | via hall center or balcony |
| House lighting control | DMX compatible |
| Followspot positions | balcony left and right available for rent from m:con |

6. Orchestra Equipment & Instruments

Instruments

- 1 Steinway C-Concert Grand Piano, price upon request (plus piano tuner)
- 2 Steinway D-Concert Grand Pianos, price upon request (plus piano tuner)
- Walcker Organ, 58 registers, 3 manual, price upon request

Orchestra Furniture

- Music stands including lighting – price on request
- Orchestra chairs including bass and timpani chairs – price on request
- Conductor's podium and music stand – price on request



1 Steinway C-227 Concert Grand Piano

A guarantee for a successful concert evening. From delicate pianissimo to powerful fortissimo, from the clarity of the treble to the profound richness of the bass, the C-227 model serves as a bridge between composer, performer, and audience.

Finish: polished black
 Dimensions: length: 227 cm,
 width: 155 cm, weight: approx. 400 kg

STEINWAY & SONS Grand Piano C-227

- Serial Number 465190, Year of Manufacture 1979, Tuning: 443 hz

2 Steinway D-274 Concert Grand Piano

Used on over 95% of the world's major stages, the D-274 captivates audiences with its excellent sound. This model is the perfect symbiosis of masterful craftsmanship, distinctive tonal volume, and a unique touch appreciated by the international pianist community.

Finish: polished black
 Dimensions: length: 274 cm,
 width: 156 cm, weight: approx. 480 kg

STEINWAY & SONS Concert Grand Piano D-274

- Serial Number 589287, Year of Manufacture 2010, Tuning: 443 hz
- Serial Number 520895, Year of Manufacture 1991, fully restored in 2024, Tuning: 443 hz

The concert grand pianos are generally tuned to 443 Hz only. Other tunings are available on request.



Walcker Organ Musensaal

58 registers, 3 manual
 Built by F. Walcker, Ludwigsburg,
 year of construction 1950
 Restoration: 2002/2003 by:
 Werkstätte für Orgelbau Mühleisen GmbH

Currently not playable.



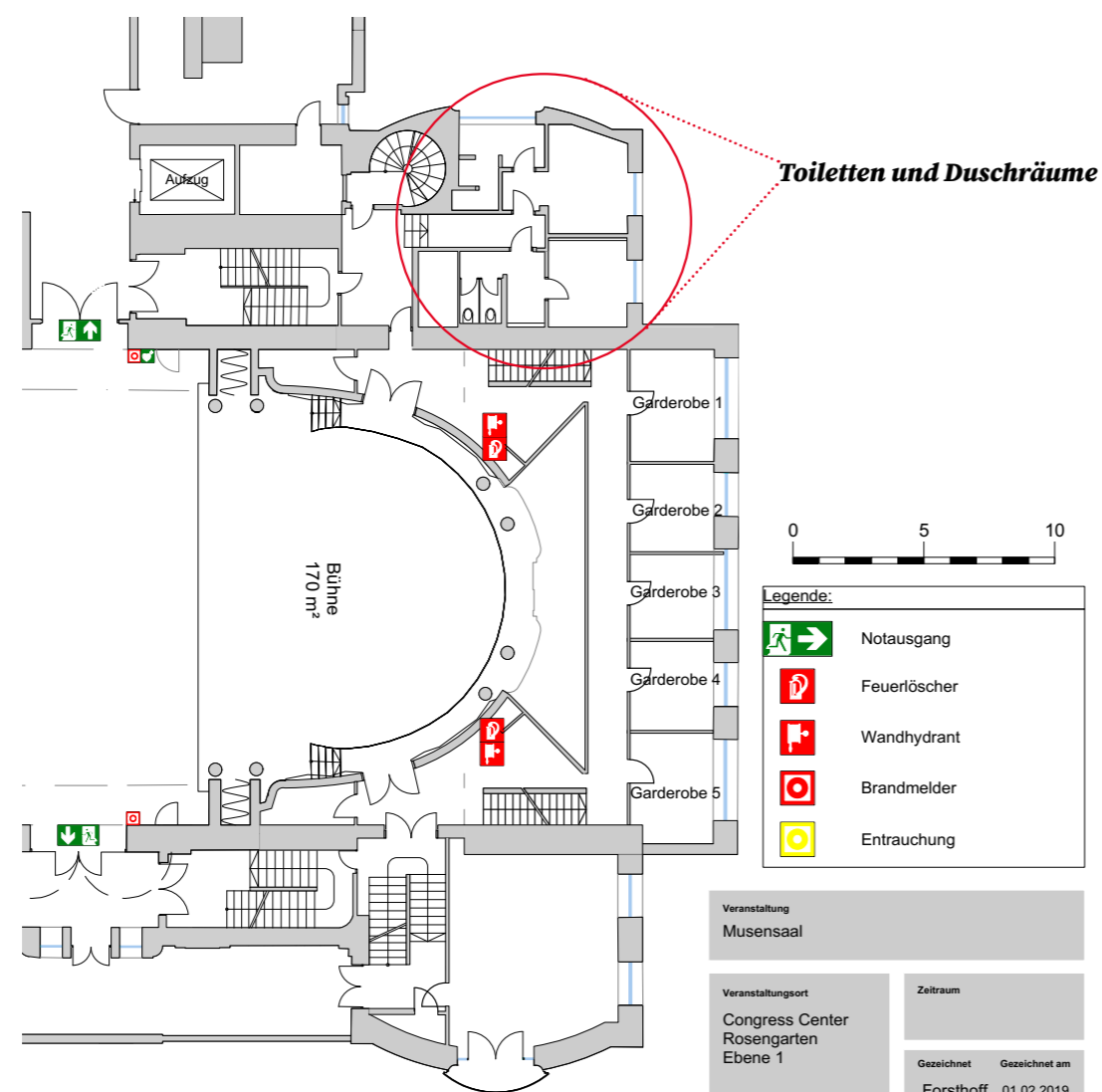
| | | | |
|--|--------|--|--------|
| Great Manual I C-a'''' | | Sesquialtera II ranks | 2 2/3' |
| Bourdon | 16' | Cymbel V ranks | 2/3' |
| Principal | 8' | Dulzian | 16' |
| Gemshorn | 8' | Oboe | 8' |
| Wooden Flute | 8' | Trumpet | 4' |
| Octave | 4' | Tremulant | |
| Chimney Flute | 4' | | |
| Twelfth | 2 2/3' | Pedal C-f' | |
| Small Principal | 2' | Contra Subbass | 32' |
| Mixture IV-VI ranks | 1 1/3' | Principal | 16' |
| Trumpet | 8' | Subbass | 16' |
| Clarine | 4' | Stopped Bass | 16' |
| | | Salicet Bass | 16' |
| | | Stopped Bass | 8' |
| Positive (Positiv) II C-a'''' | | Salicional | 8' |
| Salicional | 8' | Octave Bass | 8' |
| Traverse Flute | 8' | Choral Bass | 4' |
| Quintaton | 8' | Bass Flute | 4' |
| Principal | 4' | Field Flute | 2' |
| Gemshorn | 4' | Folk Pipe | 1' |
| Small Gedackt | 4' | Rauschpfeife V-VI ranks | 2 2/3' |
| Nazard | 2 2/3' | Trombone | 16' |
| Schwiegel | 2' | Dulzian | 16' |
| Tierce | 1 3/5' | Tuba | 8' |
| Quint | 1 1/3' | Horn | 8' |
| Sifflute | 1' | Trumpet | 4' |
| Sharp Mixture V ranks | 1' | Bass Trumpet | 4' |
| Schalmei (Shawm) | 8' | | |
| Tremulant | | | |
| | | Couplers | |
| Swell (Schwellwerk) III C-a'''' | | II/I, III/I, III/II, I/Ped., II/Ped., III/ | |
| Stopped Pommer | 8' | Ped., Sub III/I, Sub III, Super III/I, | |
| Horn Principal | 8' | Super III/Ped., Super III | |
| Spitzflute | 8' | | |
| Gedackt | 8' | Combinations | |
| Echo Gamba | 8' | Manual stops, 3 fixed combina- | |
| Unda maris | 8' | tions (Tutti, Fortissimo, Forte), 4 | |
| Wide Principal | 4' | free combinations, 2 free pedal | |
| Solo Flute | 4' | combinations, Crescendo roller, | |
| Block Flute | 2' | Roller off, Reeds off, Pedal off | |
| Nachthorn | 1' | | |

IV. Backstage/Rear Area

7. Dressing Rooms / Backstage Facilities

Backstage

- Dressing rooms/ Offices 5 rooms in different sizes
- Showers Shower room available nearby
- Internet LAN/WIFI
- Other Rooms Conferencerooms available nearby
- Küche Electric Stove + 2 Refrigerators; Kitchen and dining area not directly backstage - adjacent rooms
- Cooking with Gas NO



Veranstaltung
Musensaal

Veranstaltungsort
Congress Center Rosengarten Ebene 1

Zeitraum

Gezeichnet Gezeichnet am
Forsthoff 01.02.2019

Teilnehmer

Plangröße A3
Maßstab 1:200

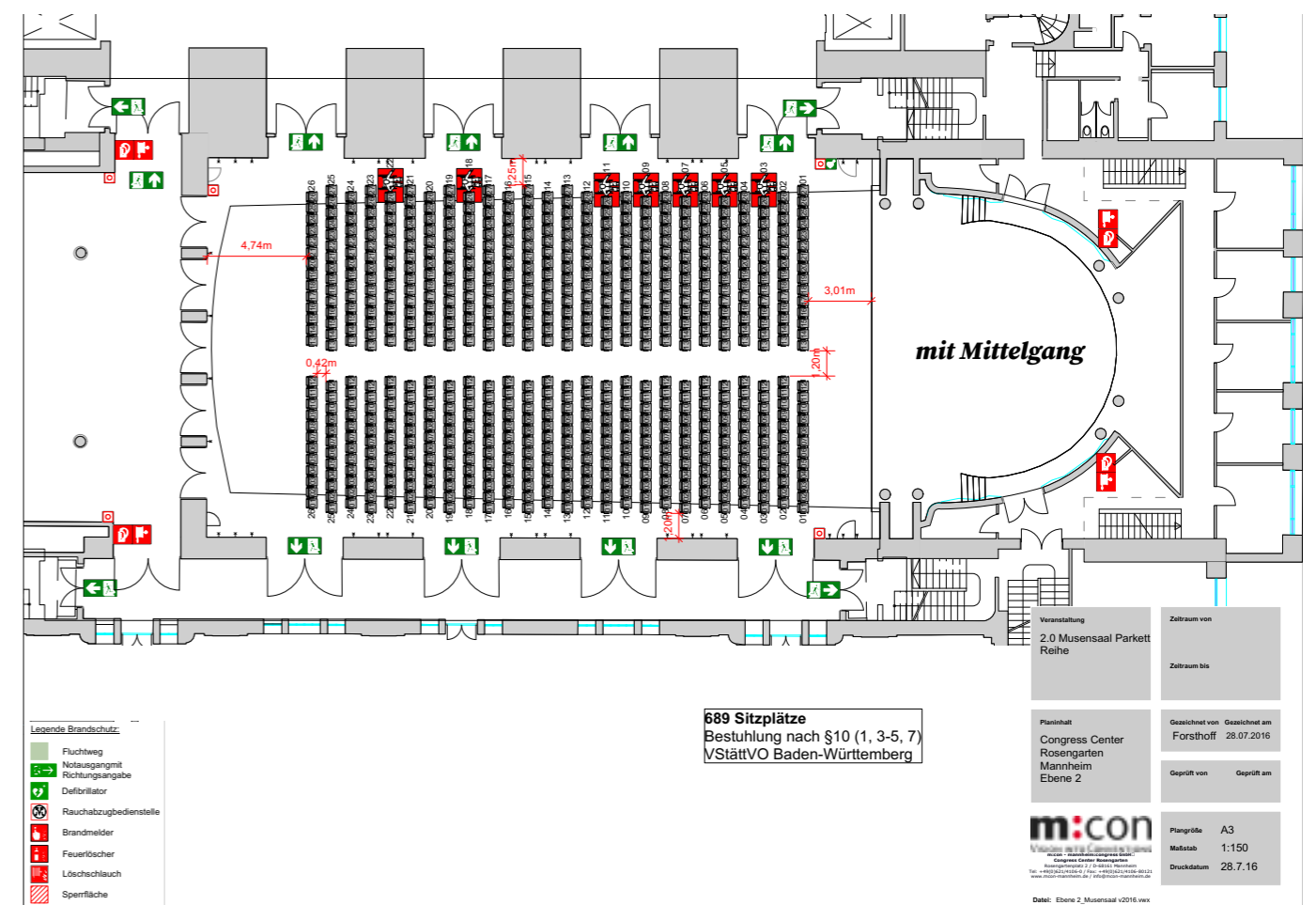
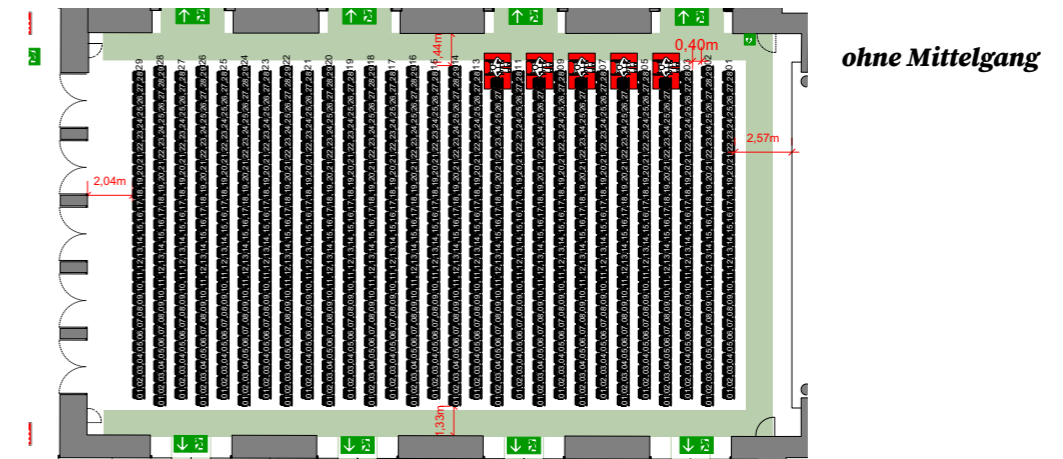
m:con
VISION INTO CONVENTIONS
m:con - mannheimcongress GmbH
Congress Center Rosengarten
Rosengartenplatz 2 / D-68161 Mannheim
Tel.: +49(0)621 14106-0 Fax: +49(0)621 14106-80121
www.m:con-mannheim.de / info@m:con-mannheim.de

Datei: CADMASTER_Rosengarten_Ebene 1v2017.vwx

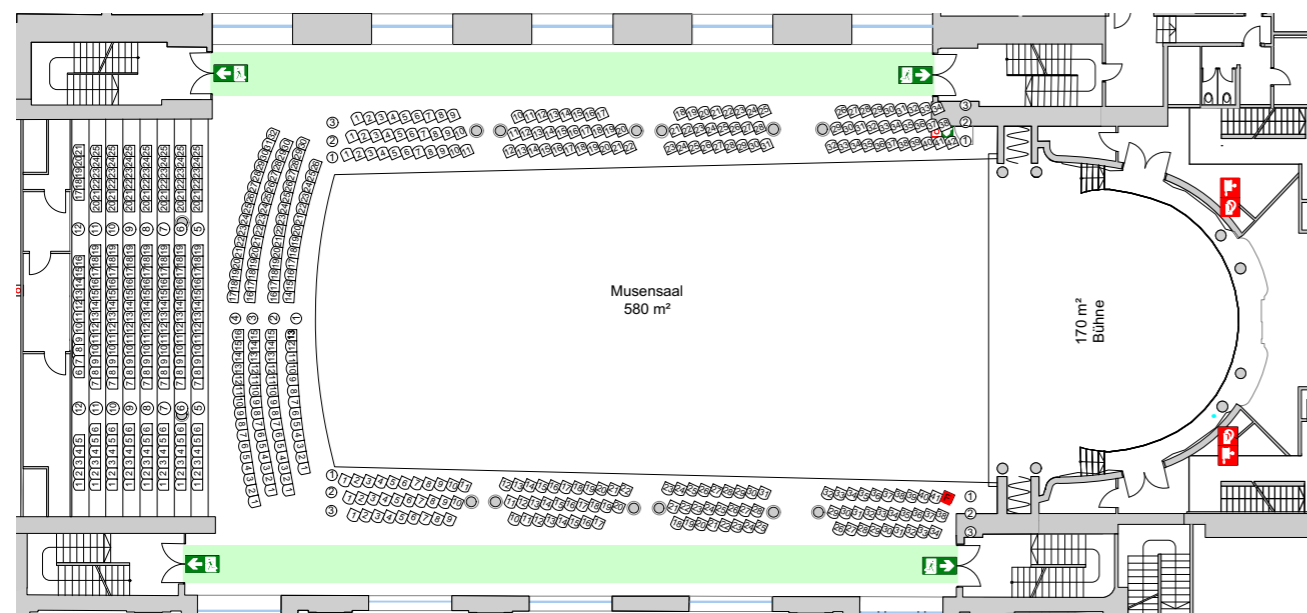
V. Front-of-House

8. Seating Plans / Hall Layouts

Parquet row seating

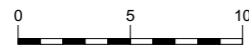


Balcony row seating



Legende:

| | |
|--|---------------|
| | Notausgang |
| | Feuerlöscher |
| | Wandhydrant |
| | Brandmelder |
| | Defibrillator |



Musensaal Empore
542 Sitzplätze
Bestuhlung nach §10 (1, 3-5)
VStättVO Baden-Württemberg

| | |
|--|--|
| Veranstaltung Reihenbestuhlung mit Rollstuhlplätzen Empore Festbestuhlung | |
| Veranstaltungsort Congress Center Rosengarten Ebene 1 Musensaal | Zeitraum Gezeichnet Gezeichnet am Forsthoff 11.02.2019 |
| Teilnehmer | |
| Plangröße A3 Maßstab 1:200 | |
| Vision into Conventions Congress Center Rosengarten 70574 Mannheim Tel. +49(0)621 2110-11 Fax. +49(0)621 2110-1020 www.m-con.com | |
| Datei: CADMASTER_Rosengarten_Ebene 1:20171.vrx | |

9. Merch

Merchandising

Location in the foyers by arrangement
Stand Fees upon request

10. Ticketing/Box Office

Box office

Location Room near the main entrance

11. Catering

Locations

Catering is available exclusively in the foyers
The exclusive catering partner is the Dorint Congress Hotel Mannheim

VI. Miscellaneous

12. House Rules

Please refer to the separate document titled House Rules for detailed information

13. Technical Guidelines

Please refer to the separate document titled Technical Guidelines for detailed information

